

JANUS CONTROL VALVE CHECK VALVE

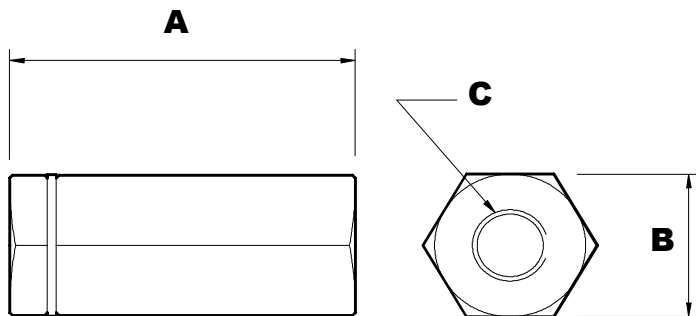
The check valves are a unique range of valves which are supplied in 316 stainless steel and high grade engineering polymer as standard, for operation on tap water to EU directive 98/83/EC. Available in 3 sizes, the range offers consistent performance even after lengthy periods of inactivity.

SPECIFICATION					
	DN6	DN9	DN12	DN16	DN25
Pressure Range (bar)	0.1 - 200	0.1 - 200	0.1 - 200	0.1 - 200	0.1-200
Feed Gallery Diameter	6	9.5	12.7	16	25
Cv	0.65	0.65	1.92	4.5	6.6
Max Flow rate L/min	30	50	60	100	200
"A" Length	56.5	89	70	147.3	147.3
"B" A/F	25.6	22.2	29	42.4	42.4
"C" Thread	1/4" BSPP	3/8" BSPP	1/2" BSPP	3/4" BSPP	1" BSPP

The sealing and control of flow occurs at 2 separate positions within the valve. This ensures the seals are not subjected to high fluid velocities minimising the potential of seal flow erosion.


Cracking Pressure

Standard valves are offered with 1 bar cracking pressure. Cracking pressures from 0.1 bar to 6 bar are available. If specific pressures are required then please consult TWHC.



Dimensions in mm (see table)



ORDERING CODES	DN6	DN9	DN12	DN16	DN25
 Check	210BXS	210CXS	210DXS	210EXS	210FXS

The Water Hydraulics Co. Ltd.

Alexandra House, English Street, Hull, East Yorkshire, HU3 2DJ, United Kingdom.

Tel: +44 (0)1482 595000, E-Mail: sales@waterhydraulics.co.uk.

England Website: www.waterhydraulics.co.uk

Whilst every endeavour has been made to ensure accuracy, this publication cannot be considered to represent part of any contract, whether expressed or implied. The publishers reserve the right to amend specification at their discretion.



FM 87247